



European Master in Biological
and Chemical Engineering for
a Sustainable Bioeconomy

Student Handbook 2021–2023



With the support of the
Erasmus+ Programme
of the European Union

Summary

Foreword	page 3
Presentation of the Bioceb programme	page 4
Contact information	page 10
Presentation of Bioceb associated partners	page 11
Study programme	page 13
Course content	page 16
Management of the scholarships	page 22
Before your arrival	page 24
Life and studies at the Host institutions	page 26
- First Semester at URCA	page 27
- Second Semester at TalTech	page 42
- Second and Third Semesters at AgroParisTech	page 52

Foreword

Dear students,

We are delighted to welcome you in the Bioceb community for this second cohort of the Bioceb programme! You have been chosen among numerous candidates from the whole world and we believe you will bring a quality contribution to Bioceb. During these two intensive years, you will discover different locations and countries in Europe and meet students selected from all over the world.

Studying in a new country and a new cultural environment is exciting but it can also surprise or even challenge you. In order to help you in this long

journey throughout Europe, we gathered in this Guide all the needful information that could be useful to you. This will help you to go through sometimes tricky administrative procedures and prepare your adaptation to different education contexts with specific rules. You will also find in this Guide information about the organisation and content of the studies as well as suggestions of activities and visits for your free time.

Looking forward to meeting you at the Induction week!



PRESENTATION OF THE BIOCEB PROGRAMME

A two-year Erasmus Mundus Joint Master Degree (EMJMD)

An EMJMD is a high-level integrated international study programme delivered by an international consortium of HEIs from different countries and, where relevant, other educational and/or non-educational partners with specific expertise and interest in the study areas/professional domains covered by the joint programme. Their specificity lies in the high degree of jointness/integration and the excellent academic content and methodology they offer.



Erasmus+

As part of the Erasmus + programme of the European Union, EMJMDs are partially financed by the European Commission. Most the amount is dedicated to offer attractive scholarships for the best candidates of each intakes called Erasmus Mundus scholarships. Bioceb programme was awarded the title of EMJMD in 2019 for 6 years and welcomed its first cohort of international students in 2020.

More information about the EMJMDs and the Erasmus + programme : [Erasmus + website](#)

Bioceb : European Master in Biological and Chemical Engineering for a Sustainable Bioeconomy

Bioceb is a 2-year joint master programme training future research and innovation managers to tackle the challenges related to the deployment of the bioeconomy across the world. Bioceb vision of the bioeconomy is based on a sustainable use of biological resources preserving biodiversity and favoring circular economy systems. It offers students with backgrounds in disciplines



related to biology the opportunity to achieve a specialization in one field of biotechnologies while developing the ability to implement systemic value chain approaches.

Biological resource diversity and optimal use, bioprocess design and upscaling, and biobased products engineering for targeted markets are the three pillars of Bioceb biotechnology training core.

Bioceb addresses the needs of the growing bio-based industry sector in scientists being aware of the markets and the socio-economic contexts. It arises from an interdisciplinary approach combining chemistry, biology, economic and environmental sciences with cross-cutting skills including project management. Its modular construction promotes cultural mix between students from different regions of the world and with various education backgrounds.

BIOCEB CONSORTIUM

Institut national des sciences et industries du vivant et de l'environnement (AgroParisTech), France



AgroParisTech – National Institute of Technology for Life, Food and Environmental Sciences is a public institute with a rich history that spans over 180 years and the coordinator of the Bioceb Master course. It is the leading French Graduate School in Agronomy, Environment, Life Sciences and Food Technology, ranked 1st in France and 4th worldwide on the QS ranking in the “Agriculture and Forestry” discipline in 2021. University Paris-Saclay was ranked 14th worldwide at the “Shanghai Ranking”



2020. As leading French Higher education institution in agricultural and environmental sciences and component institution of UP Saclay, AgroParisTech is a key contributor to its success: rank 12 in agriculture and 35 in Biotechnology.

Its forward-looking approach is aimed at addressing the main global challenges of the 21st century: Feeding the population in a sustainable way, Protecting natural resources, Fostering innovation, Developing the bioeconomy.

Its headquarters are located in Paris with campuses in the Parisian region and throughout France. Since 2015 AgroParisTech is a founding member and component institution of Université Paris Saclay, the new French high-tech and innovation hub gathering 14 prestigious higher education and research institutions, with no fewer than 2 Nobel Prize winners and 6 Fields medalists."

More information on AgroParisTech official website:

<http://www2.agroparistech.fr/>

Université de Reims Champagne-Ardenne (URCA), France



As multidisciplinary university dedicated to excellence, URCA provides training to more than 25,000 students in all fields of knowledge as close as possible to the needs of society, through courses based on innovative research of international reputation. Located at the cross-road of Ile-de-France, the Rhineland, Northern Europe and Italy, URCA

occupies a geostrategic position that gives it advantages for European and international exchanges. The university largely contributes to the development of Champagne-Ardenne through its partnerships with local and national companies and the regional authorities.



Thanks to an ambitious, competitive and realistic internationalization strategy, URCA was awarded the European CeQuInt quality label (Certificate for Quality in Internationalization) in February 2015, an award given following an assessment of the quality of the institution's international dimension and internationalization.

More information on URCA official website: www.univ-reims.eu

Aalto University, Finland



Aalto University was founded in 2010 from the merger of Helsinki University of Technology, the Helsinki School of Economics and the University of Art and

Design Helsinki. Beyond its main campus, other campuses are located in Töölö and Arabia in Helsinki. The aim of the institution's foundation was to create a new innovative university combining science and technology, business and economics, design and art.



The name of the institution is a tribute to the life and work of Finnish architect Alvar Aalto. The core of the Otaniemi site is a park campus, designed by him. The campus and its surrounds are the location for the headquarters of Finland's largest companies' headquarters, as well as smaller enterprises. Otaniemi is also home to over two thousand students. The institution is a foundation-based university. The capital of the foundation was formed by donations from the government alongside those from Finnish industries and other financiers.

Aalto University is a multidisciplinary community of bold thinkers, where science and art meet technology and business. The University is committed

to identifying and solving grand societal challenges and building an innovative future. Aalto University main campus is located in Otaniemi in Espoo, Finland. The institution has six schools with around 20,000 students in total and 4,500 staff, 400 of whom are professors. Courses are offered across schools of arts, design and architecture, chemical technology, business, electrical engineering, engineering and science. Around 30 per cent of staff are from abroad.

More information on Aalto official website : <https://www.aalto.fi/en>

Tallinn University of Technology (TalTech), Estonia



Tallinn University of Technology (TalTech), the only technological university in Estonia, is the flagship of Estonian engineering and technology education. The synergy between different fields (technological, natural, exact, economic and health sciences) is created and new ideas are born. TalTech is to become one of the leading technological universities in the Baltic Sea region.

Study and teaching is based on internationally recognized research and the graduates are highly rated on the labour market. The University's

approximately 70,000 alumni have shaped the economic landscape of present-day Estonia.



TalTech is a university, which, by relying on academic competencies and professional management, responds actively to the needs of the rapidly developing society and is involved in tackling the challenges of the digital era. TalTech offers its students exciting student and cultural life and the best accommodation and sporting opportunities in the Baltic Sea region. The TalTech campus is also a home to more than 200 high-tech companies (e.g. Skype).

More information on TalTech official website: <https://www.taltech.ee/>

University of Liège (Belgium)



Gembloux Agro-Bio Tech is a faculty of the University of Liège, exclusively dedicated to life sciences and bioengineering. For more than 150 years, Gembloux Agro-Bio Tech has

established itself as a true centre of expertise in the field of life sciences and biological engineering. Integrated into the University of Liège since the 1st of October 2009, Gembloux Agro-Bio Tech is a friendly-sized faculty recognised internationally for the quality of its teaching and the excellence of its research. This reputation attracts more than a thousand students from some forty countries.



Gembloux Agro-Bio Tech trains academics and engineers to be able to meet the challenges facing society in the fields of environmental protection, production, processing and enhancement of biore-sources. The four bioscience engineering masters are all accredited by the Commission of Engineer's Titles (CTI) and have received the EUR-ACE label (European Quality Label for Engineering Degree Programmes).

More information on Gembloux Agro-Bio Tech official website: www.gembloux.uliege.be

Bioceb, a Consortium of 5 European Higher Education Institutions



Contact information, Bioceb Partners

AGROPARISTECH, FRANCE

Bioceb Secretary - bioceb@agroparistech.fr

Bioceb coordinator : Prof. Stephanie Baumberger

stephanie.baumberger@agroparistech.fr

Bioceb project manager: Adam Garnell

adam.garnell@agroparistech.fr

UNIVERSITÉ DE REIMS CHAMPAGNE-ARDENNE, FRANCE

Local academic coordinator: Prof. Caroline Remond

caroline.remond@univ-reims.fr

Administrative contact: Maureen Raab

maureen.raab@univ-reims.fr

Time schedule : Prof. Florence Mazeyrat

florence.gourbeyre@univ-reims.fr

Enrolment and administrative matters : Annabel Richard

annabel.richard@univ-reims.fr

Student life : Pascale Cliquot

pascale.cliquot@univ-reims.fr

TALLIN UNIVERSITY OF TECHNOLOGY, ESTONIA

Local academic coordinators: Prof. Jaan Kers -

jaan.kers@taltech.ee and Prof. Yevgen Karpichev -

yevgen.karpichev@taltech.ee

Administrative contact: Kerti Sönmez - kerti.sonmez@taltech.ee

AALTO UNIVERSITY, FINLAND

Local academic coordinator: Prof. Kontturi Eero

eero.kontturi@aalto.fi

Administrative contact: Anja Hänninen - anja.hanninen@aalto.fi

UNIVERSITE DE LIEGE, BELGIUM

Local academic coordinator: Prof. Aurore Richel

a.richel@uliege.be

Administrative contact: Laurent de Potter

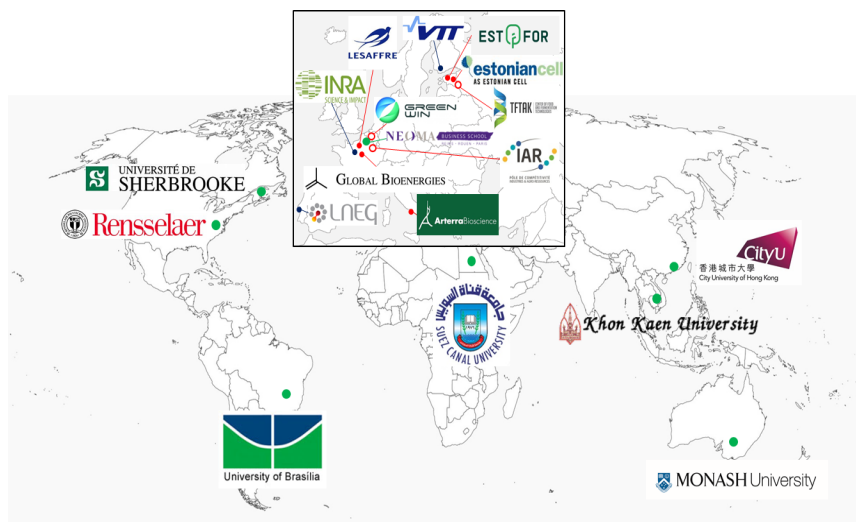
erasmus.gembloux@uliege.be

Bioceb website : <http://www.bioceb.eu/>

Bioceb LinkedIn : <https://www.linkedin.com/company/bioceb>

Bioceb Facebook : <https://www.facebook.com/Bioceb-100787238382887>

Presentation of the Bioceb Associated partners



Bioceb is supported by an international network of 19 strategic partners from academic, research and industrial sector. Several partners contribute to the education and career development leading to gain professional competences and enhancing student's employability. They act in training, promoting, sponsoring and advisory activities to make Bioceb a professional training programme adapted to today's and tomorrow's market needs. Bioceb includes different socio-economic networks, so as to ensure that bioeconomy main industrial actors (SMEs and multinational) are associated to the project.

The selected associated partners are actors of innovation with international visibility in the bioeconomy field. They are involved in multidisciplinary activities combining chemistry and biotechnology for the conversion of biomass. They include two regional clusters representative of socio-economic local networks as well as a number of companies (SME or multinational), research organisations and internationally-renowned universities, building thus a balanced network supporting Bioceb needs: promotion and recruitment of excellent students from all over the world; guest lectures contributing to academic excellence and socio-economic connection of Bioceb;

access to infrastructures and site visits; contribution to employability, notably through proposition of internships. Their distribution at the international scale ensures to cover world regions with different bioeconomy models and develop the global vision of the students.

List of associated partners

Socio-economic partners

[ASSOCIATION INDUSTRIES ET AGRO-RESSOURCES - Pôle IAR](#) (France)

[LESAFFRE INTERNATIONAL SARL](#) (France)

[GLOBAL BIOENERGIES](#) (France)

[POLE GREENWIN](#) (Belgium)

[AS Estonian Cell](#) (Estonia)

Est-For Invest OÜ (Estonia)

[TFTAK - Center of Food and Fermentation Technologies](#) (Estonia)

[Arterra Bioscience](#) (Italy)

Research organisations and training partners

[Teknologian tutkimuskeskus VTT Oy](#) (Finland)

[INRA](#) (France)

[NEOMA BUSINESS SCHOOL](#) (France)

[LNEG](#) (Portugal)

International academic partners

[Rensselaer Polytechnic Institute](#) (USA)

[MONASH UNIVERSITY](#) (Australia)

[UNIVERSITE DE SHERBROOKE](#) (Canada)

[KHON KAEN UNIVERSITY](#) (Thailand)

[Suez Canal University](#) (Egypt)

[FUNDACAO UNIVERSIDADE DE BRASILIA](#) (Brasil)

[City University of Hong Kong](#) (Hong Kong)

Some examples of involvement of associated partners in 2020-2021:

- Access to the scientific database of the Pôle IAR
- Lecture on the regulatory aspects of Biofuels in the EU and the world by a specialist from the LNEG.
- Some students found a summer internships at the LNEG in Portugal

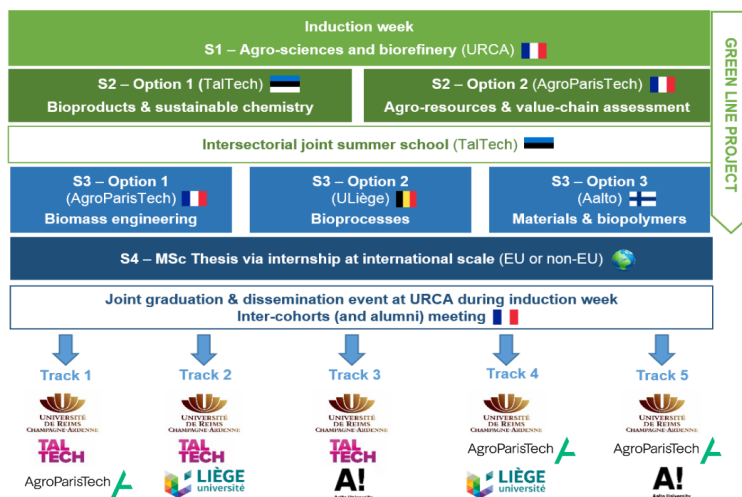
Study programme

Bioceb aims to qualify students to cope with the challenges related to bioeconomy value chains, from biomass to bioproducts and markets. The programme is designed so as to provide the job market with highly adaptable and entrepreneurial scientists trained to holistic approach at different scales.

Selected students will follow an intensive curriculum during two years with mandatory mobility periods among the partner Universities, shared between academic courses, teamwork, practical trainings and internship for their MSc. thesis.

This will allow them to acquire necessary competences and skills for their future professional responsibilities.

In order to promote the development of sustainable and circular bioeconomy systems, the programme goes beyond the biomass processing technical issues, by providing knowledge of green chemistry principles, tools for socio-economic and environmental assessment, experience of facing real-life bioeconomy challenges through projects and examples of flexible biorefinery systems adapted to local contexts.



Track 1: Bioproducts, green chemistry, biomass engineering

Track 2: Bioproducts, green chemistry, bioprocesses

Track 3: Bioproducts, green chemistry, materials, polymers

Track 4: Agro-resources, value-chain assessment, bioprocesses

Track 5: Agro-resources, value-chain assessment, materials, polymers

General organisation and content of the semesters

Bioceb offers the students a fully integrated Master degree programme recognized in all participating countries. Its modular organisation favors student mobility and international experience while preserving jointness and interconnection between the different possible tracks.

The joint first semester (S1) at URCA provides a multidisciplinary scientific knowledge base and a shared culture in the field of agro-resources and their conversion through biorefinery processes.

The second semester (S2) allows the students to enrich their technical and scientific experience with cross-cutting approaches dealing with value-chain sustainability assessment, with specific focus either on economics (AgroParisTech) or on green chemistry principles (TalTech).

The third semester (S3) offers a specialization in one of the key biotechnology approaches of bioeconomy: biomass engineering (AgroParisTech), bioprocesses (ULiège) and bio-based products (Aalto).

The fourth semester (S4) is dedicated to a R&D internship, according to your specialization path and professional plans, leading to a Master's thesis preparation and defence.

Bioceb study tracks

Bioceb study tracks

Modular track	Targeted scientific and management activities
Track 1 : Bioproducts, green chemistry, biomass engineering	Production of tailored plants and microorganisms to increase the sustainability of the value chains (adaptation of plant to climate change, preservation of biodiversity and food resources, etc.)
Track 2 : Bioproducts, green chemistry, bioprocesses	Design, optimization and up-scaling of processes for the production of biobased molecules, combining fermentation and chemistry and taking into account the principle of green chemistry (in particular waste reduction)
Track 3 : Bioproducts, green chemistry, materials, polymers	Design and development of bioproducts and biomaterials in particular biodegradable materials, and exploiting the diversity of new structures
Track 4 : Agro-resources, value chain assessment, bioprocesses	Design of new sustainable value chains and processes involving flexible multi-resources and multi-products biorefineries
Track 5 : Agro-resources, value chain assessment, materials, polymers	Design of new sustainable value chains and products for bio-based materials, to substitute fossil-based solutions and create new products

Course content

Semester 1

The joint first semester at URCA provides a multidisciplinary scientific knowledge base and a shared culture in the field of agro-resources and their conversion through biorefinery processes.

S1 (URCA)	30 ECTS
Disciplinary strengthening in chemistry or biology and in process engineering	3
Physiology and genetic of plant development	6
Agricultural and viticultural soils	3
Plant-soil interactions	3
Plant components and biorefining	6
Molecular biology of microorganisms	3
Green Chemistry, biosourced, building-blocks	3
Green Line project – 1 st stage	3

More information about the courses at URCA: [Syllabus of the first semester at URCA](#)

Semester 2

The second semester (S2) allows the students to enrich their technical and scientific experience with cross-cutting approaches dealing with value-chain sustainability assessment, with specific focus either on economics (AgroParisTech) or on green chemistry principles (TalTech).

S2 (AgroParisTech)	30 ECTS
Economic tools for environmental analysis	6
Biomass Resources and Territories	6
Decision Aiding, Operation Research and Sciences for innovation	3
Environmental Assessment for a sustainable bio-economy	4
Bioenergies and lignocelluloses	2
Green line project – 2 nd stage (Project engineering, experimentations, market analysis)	6
Interculturality and creativity	3
S2 (TalTech)	30 ECTS
Green chemistry metrics for feedstocks to biochemical development	6
Sustainable and cleaner production	6
Biopolymers: basics, introduction and applications	6
Biorefinery systems: enzyme tech., chem. Processes design, kinetics	6
LCA of green technologies (Green line project – 2 nd stage)	6
BIOCEB EVENT = SUMMER SCHOOL	

More information about the courses at AgroParisTech (S2): [Syllabus of the second semester at AgroParisTech](#)

More information about the courses at TalTech (S2): [Syllabus of the second semester at TalTech](#)

Semester 3

The third semester (S3) offers a specialisation in one of the key biotechnology approaches of bioeconomy: biomass engineering (AgroParisTech), bioprocesses (ULiège) and bio-based products (Aalto).

S3 (AgroParisTech)	30 ECTS
Genetic manipulation of plant resources or Cell factory design	6
Specialized metabolites in biotechnologies	6
Biomolecules, biomaterials, bioenergy	4
Bioeconomy	4
Extraction and separation strategies in bio-industries: evolutions and innovations	5
Green Line project – 3 rd stage	5
S3 (ULiège)	30 ECTS
Biological chemistry and corresponding processes engineering	6
Practice of the chemistry of natural substances	4
Chemistry of bioenergy production	7
Microbial biotechnology – applications	6
Portfolio (innovative economical activities development)	2
Green Line project – 3 rd stage	5
S3 (Aalto)	30 ECTS
An introduction to wood properties and wood products	5
Plant biomass	5
Fibres and fibre products course	5
Lignocellulose chemistry	5
Cellulose based fibers (Green Line project – 3 rd stage)	5
Polymer blends and composites	5
S4 – MSc thesis during research internship	30
BIOCEB EVENT = GRADUATION AND DISSEMINATION	

More information about the courses at AgroParisTech (S3): [Syllabus of the third semester at APT](#)

More information about the courses at ULiège (S3): [Syllabus of the third semester at ULiège](#)

More information about the courses at Aalto (S3): [Syllabus of the third semester at Aalto](#)

Semester 4: Bioceb Internship and Master Thesis

MSc thesis work, carried out during S4 through a research internship, is deemed essential within the Bioceb joint programme, as work in a real professional setting is essential to fully prepare students to their professional induction before their graduation. This work experience makes the young graduate more attractive to potential employers.

MSc thesis can be prepared in academic labs of different partner universities or associated partners or private companies, **at any location worldwide**. This internship will ensure the professionalization of the student by providing complementary scientific and technical skills together with soft skills. This training will enable the students to develop their functional skills in laboratory training in connection with the biotechnology-based industries worldwide. The provided high quality training will be useful to find attractive jobs throughout their career.

Master thesis will be agreed with and supervised by the local coordinator of the second year hosting partner institution and under the general coordination of the Bioceb coordinating professor.

Duration of MSc thesis internship should be 4-6 months.

Green Line Project

All along the first 3 semesters, the students will have to carry out a cosupervised and jointly evaluated project named "Green Line project", engaging groups of minimum 2-3 students.

Projects will be real case applications in the domain of the valorisation of renewable resources. They include technical and scientific aspects, such as economic and environmental ones.

The project includes:

- **First stage (S1):** definition of the objectives, structure and boundaries of the project through exchanges with socio-economic bioeconomy actors and literature state of the art (3 ECTS) → deliverable = written report;
- **Second stage (S2):** investigate a specific technological question and use basic economic and environmental evaluation tools for a preliminary test of feasibility of the concept (work integrated within the 6 ECTS Project Engineering module in AgroParisTech and 6 ECTS Life cycle analysis of green technologies module in TalTech) → deliverable = written report and presentation during a Green Line Project Forum in May.
- **Third stage (S3):** in-depth scientific/technical study, final conclusions and dissemination (5 ECTS) → deliverable = final report jointly prepared by the group taking into account work done in S1 and S2.

More information about the Green Line Project stage 3: [Green Line Project - 3rd stage](#)

2021-2023 topics will be presented during the Induction week and the final choice will have to be done at the beginning of the Semester. These topics will be market-oriented and transversal with an innovative approach. It will be the first opportunity for the students to work on industrial real cases. The Green Line project is key to the programme jointness. It gives each student the opportunity to benefit from the partners' complementary expertise, facilities and environment in order to

reach his/her project's goal. It also enhances interactions between partners through the organisation of joint pedagogical teams on common topics of interest.



Cohort 2020-2022 list of Green Line Project topics :

- * Eco-friendly solutions for plant health based on phenolic extracts
- * Combined plant selection and pre-treatment to optimise lignocellulose valorisation
- * Production of active ingredients for kerosene by lignin conversion
- * Production of bio-based polyesters from agricultural by-products
- * Chemical valorisation of cellulose in ionic liquid environment
- * Integrative process for the microbial production and extraction of molecules of interest
- * Combined metabolic and process engineering to convert a by-product into a value-added chemical
- * Nanocellulose production, properties and market opportunities

Bioceb Pedagogical events

- The **Induction week** is organised in Reims the last week of August including: detailed presentation of curriculum and study tracks; presentation of Green Line projects ; inspirational lectures; site visit; “integration” trainings (French basics, intercultural training); going through administrative issues; social events enabling students to get to know each other and start building a solid network.

Induction week 2021: 23-28
August 2021

- The **Summer School** is organised in Tallinn at the end of S2 (end of June), during about 7 days, gathering students after a S2 spent in 2 different locations, comprising different activities such as: guest lectures, site visit, soft skills training, 1-day workshop on Green Line projects including oral presentations, S2 course content overview (oral presentation of students detailing key learnings from their S2 to the ones who attended the other S2), and social activities.

Expected date: end of June
2022.

- A **final joint graduation event** organised during the Induction week for the new incoming cohort, including several parallel activities (e.g.: posters session, dissemination event, job dating/fair), in order to connect cohorts and inspire the incoming students.



Bioceb degrees awarded

Successful Bioceb students will obtain a triple degree (according to their study track), i.e. National Master Degree certificates from the highly renowned European Partner Universities with a Joint Diploma Supplement which encapsulate the jointness of the programme, the mobility experience of each student as well as information on the qualifications obtained and a full transcript of all ECTS credits obtained during the Master course.

List of degrees:



Master in Integrative Biology and Physiology (IBP), study track Biomass Engineering for Bioeconomy (BEB), delivered by the Université Paris-Saclay (UPSaclay), operated by AgroParisTech



Master of Science (Technology), delivered by the Aalto University



Master of Science in Engineering, delivered by Tallinn University of Technology (TalTech), Estonia



Master in Bioengineering: Chemistry and Bio-industries), delivered by the University of Liège (ULiège)



Master in Biology AgroSciences (BAS), delivered by the University of Reims Champagne-Ardenne (URCA)

Translation of national marks

ECTS grade	Definition	Corresponding grades			
		France	Belgium	Estonia	Finland
A	EXCELLENT outstanding performance with no errors	16-20	18-20	5	5
B	VERY GOOD above the average standard but with some minor errors	15-15,99	16-17	4	4
C	GOOD above the average standard but with a number of notable errors	13-14,99	14-15	3	3
D	SATISFACTORY fair but with significant shortcomings	11-12,99	11-13	2	2
E	SUFFICIENT-PASSING performance meets the minimum criteria	10 - 10,99	10	1	1

For more information about the different national higher education systems, please visit the following website:

[French higher education system](#)

[Belgian higher education system](#)

[Estonian higher education system](#)

[Finnish higher education system](#)

Management of the scholarships

Erasmus+ scholarships

The amount of the Erasmus Mundus scholarship is indicated in your Student Agreement. A part of the scholarship (9000 €/year for Partner country students and 4500 €/year for Programme country students) is directly used by the Bioceb consortium to cover the participation costs which include:

- Registration in the institutions (institutional university fees)
- Insurance coverage
- Participation in the Induction week and the Summer school
- Administrative assistance
- Issuing of the diplomas and the diploma supplement

The Erasmus Mundus scholarship covers subscription fees. Subscription fees will be paid directly by the coordinating institution to the universities: you don't have anything to do.

The amount of the scholarship also depends whether you are Partner country or Programme country students. The scholarship is divided in three :

1) A contribution to travel costs:

- Partner country residents: 2.000€/year per student (if student's location is less than 4.000km away from Paris, France, the coordinating institution)
- 3.000€/year per student (if student's location is more than 4.000km away from Paris, France, the coordinating institution)
- Programme country residents: 1.000€/year per student

2) A contribution to installation costs:

Partner country residents: 1.000€ (once) per student / No contribution to installation costs for programme country residents.

3) A contribution to subsistence costs:

1.000€ / month for the entire duration of the EMJMD study programme (= 24 months).

The scholarship will be paid to the student on his/her personal bank account. It is compulsory to have a European bank account in Euros. You can subscribe to a bank online (such as N26) or physically after arriving in Reims (such as BNP PARISBAS). In order to receive the first payment of your scholarship, you have to send a RIB ("Relevé d'identité bancaire") to the Bioceb secretariat.

A **RIB** is a pre-printed form with your bank account number and sort codes for national and international transactions. You can generally ask for it directly to your bank or on your bank account online. It is also possible that your bank provides you with a RIB when you open your account.

The payment of the monthly allowance occurs around the 5th of each month (1000€ per month). The first payment of the scholarship includes the contribution to travel and installation costs as well as the first monthly allowance (can be paid only if you are present in Reims). You will receive the first payment at the beginning of September (provided that you are physically present in Reims). Please inform the Bioceb secretariat and URCA when you arrive. As the opening of a bank account in France can take a few days, we strongly recommend you to come to France with enough money for 2-3 weeks at least, before receiving the first payment. You will have to send a valid RIB to the Bioceb secretariat as soon as possible.

Other scholarship opportunities for self-paying students

Find some scholarship opportunities on the [Bioceb website](#).

Many scholarship opportunities are classified by Campus France in its digital tool [Campus Bourse](#).

Insurance

All Erasmus Mundus students (both scholars and self-paying) are insured by a private company chosen by Bioceb Consortium (called Marsh Insurance). This cost is included in the registration fees. The insurance includes accidents, death, health costs, emergency dental care, assistance to persons (repatriation or medical transport, early return in case of the death of a relative, search and rescue costs, travel assistance, legal assistance, etc.) and civil liability (property damage, body injury). Bioceb will do the formalities to register all students. The insurance company will send you individual cards with information as to how you can contact them in case of problems.

Bioceb will do the formalities to register all students. The insurance company will send you individual cards with information as to how you can contact them in case of problems.

Before your arrival

Visa and Residence permit

Nationals of EU/EEA countries

27 countries are members of the European Union (EU). Three countries are not in the EU but are part of the European Economic Area (EAA): Iceland, Liechtenstein and Norway. Five countries are not members of the EU/EEA but the same rules apply for their nationals: Andorra, Monaco, Switzerland, San Marino and Vatican City State. For nationals of the above 35 countries, no visa is needed to enter France. If you are national of an EU country, you may bring with you your valid national identity card or your valid national passport. For nationals of the above 35 countries, no residence permit (titre de séjour) is required to stay in France.

Nationals of other countries

If you are not national of an EU country, you have to bring a valid national passport. Then there are 2 documents: the visa (to enter France) and the residence permit (to stay in France).

Visas

As Erasmus Mundus students, you enter in the category of students travelling under the following

category: European Union programme or multilateral programme with mobility measures in one or several European Union Member States or under an agreement between at least two higher education institutions in at least two European Union Member States. It means you need to apply to a specific visa marked “**Student - Mobility**” (“étud-mobilité” in French). This visa contains the purpose « carte de séjour à solliciter dans les 2 mois suivant l’arrivée » = «Residence permit to ask within the 2 months after your arrival”.

The **Residence permit** obtained in France will then allow you to study in all the European partners of the Bioceb consortium but you may still have to apply for a visa or a residence permit depending on the country you travel to. You will need at least to notify your arrival in the country for study purpose to the national authorities. As the procedure differs between the different countries, each university will advise you about the procedure to undertake.

How to obtain your visa ?

You need to precise that you are in a mobility programme for 2 years (student in mobility).

Check the [visa assistant](#) in order to know the supporting document required and to submit an online application.

Resident permit

After arriving in Reims, you need to apply for the Resident permit (titre de séjour). The procedure is now entirely online. Here are the different steps you need to follow :

Watch the following tutorial videos to guide you with the **Residence permit procedure**:

[\(Version FR\)](#)

[\(Version EN\)](#)

[\(Version ES\)](#)

Connexion to the website www.administration-etrangers-en-france.interieur.gouv.fr



Create your account



Submit your demand in 6 steps



Registration confirmation sent to you



Evaluation of the demand



Notification : favourable decision or refusal



Fabrication of the residence permit



Get back your residence permit at the Reims Sub-prefecture

Important: It is now possible to submit the documents accompanying your visa application digitally !

Watch the tutorial video [here](#).



LIFE AND STUDIES AT THE HOST INSTITUTIONS



First semester at URCA

Presentation of the city and the region

The Grand-Est region is the result of the merger of the former Alsace, Lorraine and Champagne-Ardenne regions. Worldwide famous for its vineyards and its champagne, the region has a privileged position in the heart of the Europe at the crossing of Germany, Belgium and Luxemburg. Beyond the hilly landscapes of the Aube and Haute-Marne, immense Champagne plains of the Marne, the Ardennes mountains and the vineyards of the Montagne de Reims regional nature park, the region is home to beautiful historic towns and art.



Reims's "Hôtel

© Carmen Moya 2012

de ville"

With approximately 185,000 inhabitants, Reims, called the «city of coronations» or «city of kings», is the largest city in the former Champagne-Ardenne region and the twelfth

biggest city in France in terms of population. Just 45 minutes away from Paris by train, Reims is famous for its history with several sites listed on UNESCO's list of world cultural inheritance.

URCA's Croix-Rouge Campus



©hanche

Reims is also a university and dynamic student city with an exceptional historical and artistic heritage (Notre-Dame cathedral, the Saint-Rémi basilica and the Palais du Tau). Several internationally renowned festivals and events, including the Magnifique Society, the FARaway theatre festival and the Flâneries Musicales in the summer, take place in Reims each year. Reims had nearly 3.5 million visitors per year.

Campus Address:

UFR Sciences Exactes et Naturelles
Moulin de la Housse - BP 1039 / 51
687 REIMS Cedex

Campus Map: <https://www.univ-reims.fr/media-files/16233/plan-moulin-de-la-housse.pdf>

Enrolment and administrative procedures

After arriving in Reims, you will need to enrol in the University and go through some administrative procedures. As you were selected for the Bioceb programme, there is of course no selection procedure after your arrival. The enrolment at URCA is purely administrative and will confirm your status of student in France (you will receive a student card).

Step 1 : payment of the Student life and campus contribution (CVEC)

The student life and campus contribution (CVEC) is a contribution intended to promote the reception and the social, health, cultural and sports assistance of students and to support health prevention and education initiatives. Students will have to pay this contribution to CROUS*. This annual contribution will be €91 for all students. For more information about the CVEC: <https://cvec.etudiant.gouv.fr/>

CROUS are public institutions under the supervision of the Ministry of National Education, Higher Education and Research. They have the aim of improving the living conditions of students in many areas: food, accommodation, grants, social and cultural actions, and help for international students... More information: www.crous-reims.fr

Payment of the Student life and campus contribution (CVEC) to CROUS is a mandatory step before you enrol at the University of Reims Champagne-Ardenne. Confirmation of payment of the CVEC will be requested when you go to the One Stop Shop. From the start of May, you can do this:

- By paying online by bank card using the following link: <https://cvec.etudiant.gouv.fr>
- Paying in cash at the counter of a French post office: having declared online that you want to pay in cash, you will have to go to a post office with your nominal payment notice to be able to pay the CVEC. You will then receive an email within 2 days inviting you to download confirmation of your payment of CVEC.

Pay attention to fill correctly all the information in the right boxes while your register at the CVEC.

Watch the following tutorial videos to guide you to the payment of the Student Life and Campus Contribution:

[\(version FR\)](#)

[\(version EN\)](#)

[\(version ES\)](#)

Step 2: complete the administrative procedures

For several years, the University of Reims Champagne-Ardenne has had a One Stop Shop to assist you with these steps. At this one stop shop, international students arriving for the first time in Champagne-Ardenne will be able to get help to complete their administrative procedures, especially those relating:

- to the Student Life and Campus Contribution (CVEC)
- to social security and top-up health
- to urban transport in the Reims conurbation
- to CROUS accommodation (halls of residence or not), to university catering and CROUS cafeterias
- to associations, some of which will be available to you and more particularly those set up for international students.

Where?

The reception of international students at URCA arriving for the first time in France takes place at the One stop shop - *Espace Reims Campus, 31 Rue du Général Sarrail in Reims*. At the One-stop-shop, you will be given an appointment for your administrative enrolment with the department that accepted your application for the new academic year.

Please bring:

- an original copy of your acceptance letter,
- original copies of your qualifications and their translation,
- original copies of your grades and their translation,
- your passport,
- confirmation of your payment of CVEC.

After checking these documents, you will be given an enrolment form.

Step 3 : Appointment with Academic affairs service

You will need to go to the appointment arranged with the department's academic affairs service to complete your administrative enrolment. Please bring:

- the completed application form,
- the supporting documents requested

Important : The tuition fees are already included in the participation costs paid by the Bioceb consortium to each partner university of the programme, so you don't have to pay the tuition fees.

After the registration completed, you will receive your student card.

URCA contact for enrolment:

annabel.richard@univ-reims.fr

scolarite.sciences@univ-reims.fr

Accommodation

URCA will reserve rooms for you at the CROUS (<https://www.crous-reims.fr/logements/>) in Reims. You should be proposed a room either at :

Résidence Evariste Galois:



Or Résidence Teilhard de Chardin:



Please note the student residences secretariat is closed in August and the CROUS will be able to reply to you only after the Summer Holidays. Exact dates of re-opening will be given to you before the summer holidays.

Bioceb students are suggested to be accommodated in one of these 2 residences in order to facilitate the link within the cohort throughout the semester.

The Bioceb consortium will inform URCA in advance about the number of students present in Reims during the first Semester so that rooms can be reserved for you. Don't worry, you will be informed by URCA about the procedures so that you can move in for the Induction week in August.

Even if URCA will reserve rooms for you, you are not obliged to accept and you can look for a room or a studio in Reims by yourself. In this case, you will have to complete the procedures by yourself. If you are not interested in having a room at the CROUS, please notify your choice to URCA and the Bioceb secretariat. Here are some useful websites to search accommodation by yourself

<https://mgellogement.fr/villes/reims/> ;
www.reims-tourisme.com/hebergements ;
www.colocationetudiant.com ;
www.appartager.com ; <https://www.leboncoin.fr/>

To access accommodation, you must have a **resident guarantor** from the European Union who will fill in the joint and several guarantee. If you don't have a guarantor, get a free rental guarantee with Visale on www.visale.fr.

The **Visale rental deposit** is a deposit granted by Action Logement to a tenant which covers the rent and rental charges of the main residence, in the event of failure to pay. Watch the following tutorial videos to guide you with the VISALE process: ([version FR](#)), ([version EN](#)), ([version ES](#)).

Documents to provide upon your arrival in your university room:

- A copy of the student card
- Passport or identity card for Europeans
- 2 passport photos
- A deposit with RIB (bank details)
- The home insurance certificate (before receiving the key to your room, you must take out home insurance). The students from the first intake used the Marsh Insurance as a home insurance for the CROUS.

What you should know about accommodation in France

Inventory: You must also do an inventory (fr. 'État des lieux') on leaving, to check, in the presence of the owner, if there is any damage to the apartment. If there is damage, the owner will use the deposit to reimburse repair costs; if no damage is reported, the deposit will be refunded. This document is signed by the owner and the tenant and describes the condition of the apartment, room by room, at the time of moving in (inventory on entering the property).

The security deposit: Often equivalent to one month's rent without charges, the security deposit (fr. "dépôt de garantie" or "caution") is paid by the tenant to the owner to ensure the proper performance of the lease; namely the regular payment of rents and the proper maintenance of the property rented. Within two months of the end of your lease, the owner will return this amount after checking that the accommodation has not been damaged.

Accommodation assistance : the CAF. To ensure access for all to accommodation, France has set up an accommodation assistance system. These grants are managed by the Caisse d'Allocation Familiale (benefits office). Depending on the type of accommodation you rent, your income and the make-up of your home, you can apply to the CAF to get one of the three housing benefits offered under this scheme:

- Personalised Housing Assistance (APL)
- Family Housing Assistance (ALF)
- Social Housing Assistance (ALS)

You can simulate the amount of your Accommodation Assistance on the [CAF's website](#).

Requests for accommodation allowance must be made to the CAF using the [online form](#).

Health and Social security cover

In France, Sécurité Sociale is the social security institution which reimburses part of health expenditure. The body that runs the department is Caisse Primaire d'Assurance Maladie (CPAM). Find more information on the [AMELI website](#). Enter the Reims ZIP CODE (Votre code postal) : 51100.

Information about the Health insurance coverage [here](#).

For European students

If you are a national of a member state of the European Union or the European Economic Area, you can get the European Health Insurance Card or EHIC (fr. Carte Européenne d'Assurance Maladie - CEAM). This card will enable you to get public health care in France (a doctor, a pharmacy, a hospital or a free clinic). If you pay for this health care, you will be reimbursed immediately or after you return to your home country. You must apply for this through your health insurance organisation before you leave. The European Health Insurance Card is free and valid for one calendar year (or more depending on your country of origin).

health insurance organisation before you leave. The European Health Insurance Card is free and valid for one calendar year (or more depending on your country of origin).

For non-EU students

As soon as you have enrolled at URCA, you must register to Social Security. This registration is free and mandatory, and it will enable you to get part of your health expenses reimbursed. To sign up for student social security go to this [link](#) and register. Once you have done this, keep the temporary social security number automatically assigned to you by the website and download your provisional Social Security registration confirmation. You will be able to submit the missing supporting documents in the personal area. Once the registration has been validated by your Caisse Primaire d'Assurance Maladie or CPAM (Primary Health Insurance Fund), you will be able to download the final confirmation of your registration with Social Security (confirmation of your rights).

Carte vitale

Non-European students registered with the Caisse Primaire d'Assurance Maladie (CPAM) apply for a «Carte Vitale». You must present it to health professionals each time you visit. It will enable you to get simple and fast refunds. If you have not yet received the carte vitale, you must take a temporary certificate to the doctor to be reimbursed after a medical examination or after you make a purchase at a pharmacy. You will first need to pay for the consultation and then send the treatment form to

Watch the following tutorial videos to guide you to register at the Social Security Cover: ([version FR](#)), ([version EN](#)), ([version ES](#))

your Caisse Primaire d'Assurance Maladie (CPAM) and your mutual insurance fund.

The Mutual Insurance Fund

A mutual (fr. mutuelle) or top-health health insurance fund (fr. complémentaire de santé) will totally or partially cover the difference between the doctor's fee and the Social Security reimbursement. As the Insurance Marsh (see page 25) already covers specific health care, the need of a mutual depends on your care needs (for instance if you follow a specific medical treatment). If you visit a specialist or do a radio after an accident or illness, Marsh should be sufficient but not for a simple check-up for instance.

Special offers exist for students for around €120 a year. You can take out top-up health insurance with student mutual insurance organisations or in some banks which often offer mutual insurance policies.

Main student mutual insurance organisations: [MGEL](#) and [LMDE](#).

Health costs covered by Marsh Insurance: Hospitalisation following accident or illness (only costs for stay in a semi-private; Treatment costs following accident or illness (only costs for stay in a semi-private; Dental

treatment costs after physical accident; Urgent dental treatment costs.

Bank account

You need to subscribe to a European bank account for the payment of the scholarship and/or for current expenditures in order to avoid paying fees during the money transactions.

2 options : Subscribe to a European bank online **or** Subscribe to a French bank account after your arrival in France (best option)

It is advisable to open a bank account as soon as you arrive . After opening your account, you will have a chequebook and bank card. Chequebooks are usually free, unlike bank cards which cost €30 to €40 per year (bank cards are usually free for students).The bank must also provide you with a RIB (Relevé d'Identité Bancaire).

The **Bank Identity Statement (RIB)** is a document provided by the bank which allows the customer to provide its bank details to any institution. It is generally asked for bank transfers (employer, Caf, etc.) or to make regular withdrawals from his account (subscription to electricity, gas, internet ...). You can ask the RIB directly to your bank or upload it on your personal bank account.

Watch the following tutorial videos to guide you to open a bank account: ([version FR](#)), ([version EN](#)), ([version ES](#))

Travelling to Reims

By plane

Before travelling to Reims, you will surely arrive by train or plane to Paris. There are 4 airports which you can use to get to Paris:

- Paris-Orly (south of Paris)
- Roissy-Charles de Gaulle (north of Paris)
- Beauvais-Tillé (100 km north of Paris)
- Paris-Val de Marne (70 km south of Reims).

More information about airports [here](#).

RER B connects Orly and Roissy airports to Gare du Nord in Paris. There are regular trains from Gare de l'Est to the cities in the Region. A direct TGV connects Charles de Gaulle airport (Roissy-CDG) to the Champagne-Ardenne train station (Reims). You can also go to the Gare de l'Est and take a train to Reims, Troyes or Charleville-Mézières. From Beauvais-Tillé airport, you can go to Gare du Nord in Paris or take the bus to Porte Maillot in Paris.

By bus

Several transport companies such as ouibus and flixbus connect to all the major European cities. If your city of departure is not connected to the destination city, you can always go to a nearby city (Paris, Metz, Dijon, etc.).

You will find all the connections, prices, departure and stop-off points on the websites of these companies (non-exhaustive list): www.ouibus.fr, www.flixbus.fr, www.eurolines.fr

By train

There are three SNCF train stations in Reims:

- **Town centre** (Centre-ville): regional trains and TGVs from and for Paris Gare de l'Est
- **Franchet d'Esperey** (near the Croix Rouge Campus and the Santé Campus): serves the Reims and Champagne-Ardenne TGV stations.
- **Champagne-Ardenne TGV**: 5 minutes from the centre of Reims by shuttle. It is directly connected to Paris Gare de l'Est (45 mins), Roissy Charles de Gaulle airport, Marne-La-Vallée / Chessy (Disneyland Paris), Strasbourg, Bordeaux St. Jean, Luxembourg, Lille Europe, Le Havre, Nantes and Rennes.

If you arrive in Paris, you need to buy a train ticket to one of the above-mentioned train stations (from Gare de l'Est). You can buy your tickets on :

<https://www.ouigo.com/es/en> or <https://en.oui.sncf/en/>

After arriving at the train station, you will surely need to take the bus or the tram. Check your travel on the [Journey Planner](#).

Local public transports

In Reims, urban transport is managed by the [CITURA network](#).

Buses and trams operate in general 7 days a week (see timetables on www.citura.fr). All tickets can be purchased and recharged at the CITURA Boutique, or tram station machines and at authorised dealers. A single ticket and book of 2 tickets can also be bought on buses. All subscriptions can be purchased and recharged at the CITURA Boutique. CAMPUS and HEBDO subscriptions can also be purchased and recharged at tram station machines and at authorised dealers. A (bus-tram) ticket is valid for one hour from when it is first validated. Connections are unlimited, and return trips are permitted on the same line. Validation is mandatory each time you get on a bus and trams, including connections.

Contact CITURA:

CITURA 6, rue Chanzy in Reims (stop Opéra) Times: Monday to Friday, from 7:30 a.m. to 7:30 p.m. and Saturday from 10 a.m. to 7 p.m.

+0 800 003 038

contact@citura.fr

www.citura.fr/

Costs of living in Reims

Living costs are difficult to estimate but here are an estimation of the main expenses:

Deposit (fr. Caution or Dépôt de garantie): equivalent of one month's rent

Health insurance for non-European students per year: free

Home insurance in a university hall of residence per year: €20-60 (The cost depends on the type of your accommodation)

Mobile phone and Sim Card: approx. €20

Basic items (washing up liquid, cleaning products): €100

Accommodation in a university hall of residence: €230-400

Studio or apartment in town: €300-500

University meals (lunch only): €65 per month (= 20 meals x €3.25)

Food: €100 - 150 per month (without university catering)

Bus subscription: €29.40 / month (+ card Grand R : 5€, to paid once)

General information about the studies at URCA

Semester 1 general calendar

The courses begin during the week after the Induction week and end before the Christmas Holidays. The semester ends with the final exams at the beginning of January (exams ended on the 9th of January 2021 for the students of the first cohort).

2021-2022 calendar

Induction week 2021: 23 – 28 August 2021

Start: 30 August 2021

End: Week before the Christmas holiday

All Saints teaching break: 30 October – 7 November 2021

Christmas holiday: 18 December 2021 – 2 January 2022

Exams: Week after the Christmas holiday

The university calendar for the University of Reims Champagne-Ardenne is available [here](#).

Courses calendar : The timetable will be sent to you at the beginning of September 2021

Examination procedures

Examination procedures contain two different types of evaluation:

- **Continuous assessment:** organised throughout the year. A grade may be awarded for work done, particularly in tutorials (tests, written work, oral presentations, etc.).
- **Partial exams** at the end of the Semester, whether written or oral. A catch-up session is organised in June-July.



©JNL PHOTOGRAPH

What you should know about the studies at URCA

The exam jury: The exam jury is composed of professors involved in the programme. The jury meets at the end of each semester after the exams and validate the results obtained both during the continuous assessment and the final exams and attributes the mentions (fair, good, very good etc...). Nominated by the president of the University or the director of the programme, the exam jury is bound by specific rules at university and national level which ensure its perfect neutrality.

Because of the time needed for the assessment of your exams and the deliberation of the exam jury, the results of the exams will not be communicated just after the exams. You will need to wait till the jury deliberations are over. The deliberations dates are mentioned on SEN academic calendar. If you want feedbacks about your exam, please contact the concerned professor by email.

Communication with the teachers:

How to communicate with the teachers should be discussed with each professor at the beginning of the courses. You will generally be able to contact the professors by email. As the professors are involved in other programmes and have their own research activity, they cannot always answer to your email directly. Use a respectful tone when writing your email (Dear professors, kind regards, signature so they can identify you etc...) in order to avoid any misunderstanding (sometimes due to cultural differences!).

Workload throughout the semester:

It is very common in France to have a concentration of work and exams at the end of the Semester. Even if the professors try their best to harmonize the workload during the semester, the last months can often be quite stressful with a lot of reports,

deadlines, continuous assessment exams etc... We strongly recommend you to progress as much as possible in the activities and projects that could be done during the first months of the semester when the workload is less intensive. It is also common in the French universities to have the exams after the Christmas Holiday, which will require from you to study during the Christmas Holidays. But don't worry, last year all the students completed the exams with success !



©Bruno Gouhoury

Interesting industrial sites to visit in the region (site visits might be included in the curriculum):

- The Pôle IAR (Cluster in Industries and Agro-resources)
- Industrial regional sites such as Givaudan and La Chanvrière de l'Aube among others
- A major European biorefinery industrial site: Pomacle-Bazancourt biorefinery

Services for students at URCA

Virtual Office (Bureau Virtuel) : The Virtual Office (Bureau Virtuel) is the personalised digital work environment for URCA students and staff. It gives access to various information: Academic (students) or administrative (staff) files; Calendar / timetables; News (personalised); Grades; Exam timetable; Online lectures; Library portal; Messaging service

Access the virtual office: click [here](#).

Multi-services card: URCA is one of the few universities in France to offer its students a personalised, digital card giving access to various services such as: public transport; CROUS university canteens; various services related to life at the University; borrowing university library books or other materials; registration for sports activities (SUAPS) with more than 60 activities on offer; from the start of the school year, to printing and photocopying at the university library.

University Canteens: The CROUS offers you the opportunity to eat in cafeterias and canteens (Restaurants Universitaires or RU) on campus or near places of study and student life for €3.25.

French lessons provided by “La Maison des langues”: La Maison des Langues (language centre) is a structure that brings together the CEREL (Resource Centre and Language Areas) and the CIEF (International Centre for French Studies) and aims to develop and promote language learning at URCA. As Bioceb students, you will benefit from two French languages courses depending on your level (beginner or intermediate) : one course is dedicated for beginners and the other for intermediate and advanced students.

The schedules will be provided once you receive your official courses calendar for the 1st semester. You will also have access to an online platform (Altissia) to practice and improve your skills. French classes are free of charge.

University Library: The University library (Bibliothèque Universitaire or BU) aims to implement the University's documentation policy in line with teaching and research requirements. More information about the "BU" : www.univ-reims.fr/bu.

Buddy system : In order to help you with your integration at URCA, the University organises a buddy system and you will be assigned a buddy. Registration at: <https://buddysystem.eu/fr/>

Buddy Family: Another programme offered by the URCA to help you during your semester in France and to live the best experience possible. You will be given the opportunity to meet a local french Family and spend a pleasant moment (cultural outing, lunch, dinner,...). All families who participate are composed by URCA administrative or academic staff. Registration at: www.univ-reims.fr/buddyfamily

Tandem Language Exchange Programme: The Tandem language exchange programme is an open method of learning languages where two persons from different cultures and mother tongues can meet and work together on a regular basis. The key to success is a reciprocal involvement and mutual support between the two partners : the same time, energy and commitment must be spent for both languages. Registration at: www.univ-reims.fr/tandemlinguistique

Sport : The University Department of Physical and Sports Activities (SUAPS) offers a multitude of traditional and new sports activities, indoor or outdoor, supervised or free practice, for everyone from beginners to the more experienced (5,000 hours, 40 activities). If you want to experience these activities in a competitive environment (whatever the level,

local, regional, national or international), all you have to do is bring all the documents requested on the URCA sports association membership form to SUAPS and a contribution of approx. €30.

Student associations campus life: Don't hesitate to contact the Student Life Office (managed by URCA students) to know more about the opportunities on the Campus !

Contact: bve@univ-reims.fr
03.26.91.81.78 / 03.26.91.31.27

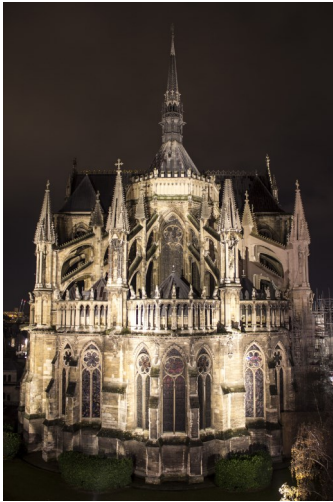
More information about Campus Life [here](#).

Leisure activities in Reims

Here are some ideas of visits and activities to do in your free-time:

Museum and historic monuments

The cathedral and the Saint Remi Basilica are must-sees of course, but also the historic and artistic museums: Palais du Tau Museum, St-Remi museum, Museum of the Surrender, the Museum of Fine Arts, Hôtel le Vergeur Museum, Fort de la Pompelle Museum, Villa Demoiselle, the former Jesuits college, Planetarium and Cryptoporticus at Place du Forum, etc...

Reims's famous cathedral

© Carmen Moya

Cultural and artistic events

Reims offers you multiple possibilities for cultural and artistic events:

- Shows and concerts at La Cartonnerie www.cartonnerie.fr

- The dance, music and circus performances at Le Manège - national theatre in Reims:

www.manegedereims.com

- The Comédie de Reims offers a very varied programme with plays by classical and contemporary playwrights: www.lacomediedereims.fr

- Opéra de Reims offers a very varied annual lyrical programme (operas, operettas, musicals, ballets, etc.): www.operadereims.com

- Saint-Ex-Culture Numérique-Reims is a welcoming discussion space which is dedicated to artistic practices (amateur and professionals).

- Two cinemas are located in Reims The Opéra cinema programme of films in the original version (V.O.), auteur films and festivals like for example «Parada Ciné» or «Hallo Kino», in collaboration with the University Cultural Action Service (SUAC).

- The fairly small-sized festival "The Magnificent Society", the newest French festival, is put on by La Cartonnerie, a venue for current music, and coorganised with Césaré, a national centre for musical creation. Each year the festival begun in 2017 presents nearly fifty artists across 4 stages, and there are areas for festival-goers to meet and share, and it has close links with Japan:

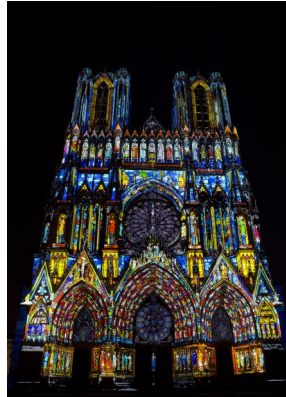
www.lamagnifiquesociety.com

- Going out Reims: To view the calendar of cultural events in Reims: www.infoculture-reims.fr

Ideas of visits in the Region

The former Champagne-Ardenne region offers cultural richness and fascinating history. In addition to more than 200 km of champagne cellars which cover the basements of Reims and Épernay, the region boasts historic towns and

castles and impressive fortresses that symbolise the history of France. The houses built in the 16th century with timber frames and pastel coloured facades are a curiosity in Troyes and create a medieval atmosphere. The Château de Sedan, the Château de Réveillon (several famous writers including Alexander Dumas and Marcel Proust stayed here) or the Château de Cirey-sur-Blaise, which was a place to relax for Voltaire and his friends, are also worth a visit. For sporty types, many hiking or biking trails are possible in the Ardennes mountain range and the forests of Argonne, Meuse valley, around Der lake, etc. The Regional Nature Park of the Mountains of Reims between Épernay and Reims, with its characteristic vineyards and villages, is a pleasant place to stay and hike.



© Carmen Moya 2012



© Carmen Moya 2012

Second Semester at TalTech

Presentation of the country, city and the University

Tallinn is the capital of Estonia. It is located in the north-eastern part of the Baltic Sea region. Medieval Tallinn enjoyed a strategic location at the crossroads of trade between Western and Northern Europe and Russia. In 1248 the city became a member of the Hanseatic League as one of the most important medieval trading towns. On 24 February 1918, Estonia declared its independence. After World War II, Estonia was occupied by the Soviet Russia and Tallinn became the capital of the Estonian Soviet Socialist Republic. In August 1991, an independent democratic Estonian state was re-established. The picturesque old town, a UNESCO World Heritage Site, and the

current novelty of the destination attract many tourists and facilities (hotels, cafes, bars, museums, restaurants) have developed to meet their needs. English is widely spoken within the tourist areas. Tallinn's population is more than 400 000.

Find more information about culture, food, news, weather [here](#).

Campus Address:

Ehitajate tee 5, 19086 Tallinn, Estonia

Campus Map: click [here](#).

TalTech University of Technology



Academic calendar

Academic year consists of two semesters: Autumn Semester and Spring Semester, both semesters are 16 weeks long, including 4 weeks examination session. The Spring Semester which concerns you begins on Monday, nearest to February 1st and ends 16 weeks later on Saturday, generally in the middle of May. Orientation Days are held a week before the beginning of the semester.

Between this date and the Summer School (which begins generally at the end of June), you will have no lectures but we can expect from you to work on your GLP and to prepare the Summer school.

Visas and resident permit

For European students

Citizens of the member states of the European Union and the European Economic Area and the Swiss Confederation ("EU citizens") have the right to stay in Estonia on the basis of a valid travel document or identity card for a period of up to 3 months/90 days. Later they have to register their place of residence and apply for Estonian ID card.

More information about the procedures and the documents to be filled [here](#).

Students with a VLS-TS "etud-mobility" (non-European students)

Non-EU students who hold a Residence Permit or D-type visa of any other EU Country, which is issued for studies, (it has to be written on the document, based on the EU directive 2016/801) which is valid during the study period, have the right to study in Estonia. Non-EU students who stay less than a year cannot apply for Estonian Temporary Residence Permit. You may apply for long term D-type visa, either in France or in Tallinn (if you are allowed to enter Estonia visa fee). In case you need to apply for the visa, you have to inform the university, when and where you are going to apply for the visa. TalTech provides a visa invitation to you. **You have to provide TalTech with the French resident permit "étud-mobility" that you obtained in France.**

More information about visa procedures in Estonia for non-EU students [here](#).

Contact at TalTech :
kerti.sonmez@taltech.ee

Enrolment and administrative procedures

You need to apply via TalTech online system. The link can be found on the [TalTech website](#). The documents needed are :

- The learning Agreement
- A copy of the Passport
- A copy of the French living permit (non-EU students).

As TalTech has specific enrolment procedures, you will be enrolled as exchange/visiting student. You will graduate as an extern but the diploma will have the same value as if you graduate as full-time student. You will indicate in the enrolment form that your Home University is the University of Reims Champagne-Ardenne.

The online **Letter of Acceptance** will be sent to you and to the Bioceb secretariat within four weeks from mid-November.

The application deadline for Spring Semester : around **November 15th**.

More information about exchange students [here](#).

Contact: kerti.sonmez@taltech.ee

Accommodation

TalTech Academic Hostel

The Academic Hostel is TalTech affiliated hostel and a legendary Erasmus-home in Tallinn. They offer accommodation for exchange students in two different houses – close to the university (at Akadeemia 11/1) and in the city centre (Endla 4). The buildings are a five minutes walk from TalTech buildings and close to the library. All rooms are fully furnished and kitchens are equipped with household appliances. All you need is to bring your personal belongings. The rent is fixed and includes all utility costs, which makes it easy to keep an eye on your expenses.



For a place in a room with 2 beds, the price is around 6-7 EUR/night (will be announced a day after the application's deadline). For a single room (it has 2 beds, but the client will stay there alone, if possible), the price is around 12 EUR/night. You will have to transfer a deposit to secure a place in the hostel (around 180 EUR – place in a twin room

and 360 EUR – single in a twin room).

Price for the stay in Academic Hostel includes:

- All rooms have bed linen/towels and blankets/pillows for free
- The bed linen set and towels are changed once a week. Weekly cleaning service is included in the price
- Kitchens are furnished with household appliances. Kitchenware and kitchen utensils are provided by the Academic Hostel
- Hygiene products (shower gel, paper towels, toilet paper) and household items (dish washing liquid, garbage bags) available daily for free
- Free Wi-Fi
- Customer service 24/7
- Technical issues are managed by the maintenance
- Rent is fixed and includes all utility costs and there is no contract initiation fee.

More information about Academic Hostel [here](#) and about accommodation for exchange students [here](#).

Contact:

info@academichostel.com
kerti.sonmez@taltech.ee

The places in the Academic Hostel will be booked for you, so you don't need to find accommodation by yourself. The registration process generally takes place in early November / mid-November but you will be informed in time by TalTech.

Off campus accommodation

If you are not interested in a room in the Academic Hostel, you can find your accommodation by yourself but please inform the Bioceb secretariat and TalTech in advance. You will find useful information to help you [here](#).

Health and social security cover

All international students must have health insurance while studying in Estonia. Tallinn University of Technology doesn't provide insurance for students and interns.

EU Students

If you are an EU citizen, please bring your European Health Insurance Card (EHIC) or its replacement certificate to prove your eligibility for Estonian health care. It provides you the basic emergency help. As each country's healthcare system is different, services that cost nothing at home might not be in another country. For example, dental care in

Estonia is expensive even for local people. Officially you have the right to get free help from the family doctor, but it takes too long time to find this doctor. Very often the help is needed faster and therefore is good if you have additional health insurance, which helps you turn to the private medicine, but the Marsh Insurance in this regards could be sufficient.

Non-EU students

You need an insurance contract guaranteeing that any costs related to your medical treatment as a result of illness or injury during your stay in Estonia will be met (Marsh Insurance already covers some expenses).

Health insurance contract must be valid in Estonia during the whole study period. If you do not have the option to make an insurance before arrival, Estonian insurances may be an alternative. Here are the main insurance companies in Estonia :

- INGES: www.inges.ee/en
- ERGO: www.ergo.ee/en
- Salva: www.salva.ee/en
- Swisscare: www.swisscare.ee/en
- Cigna: www.cignaglobal.com

Bank account

A European or French bank account is generally sufficient within the European Union. You can ask your bank if you need an “international option” but normally it is not the case.

If you want to open an Estonian bank account, here are the main banks in Estonia:

LHV: <https://www.lhv.ee/en>

Luminor: <https://luminor.ee/pre-login>

SEB : <https://www.seb.ee/eng>

Swebank: <https://www.swedbank.ee/private/d2d/start>

To open the bank account in Estonia you need a confirmation letter from Mobility Centre.

For non-EU students we suggest to turn to LHV Bank, as there they do not need to pay for opening the bank account.

Travelling to the university

By plane

Tallinn Airport is located just 3 km from the city centre. Purchase a Public Transport Card from "R-kiosk" (situated in the airport building) for the price of 2 € and load 30 euros on that card by giving money to the sales person and they will upload it on to the card. This first payment will allow you to ride for one month in Tallinn. After that, you would have to recharge it with another payment. The card is valid until the end of your study period.

From the city center, near Kaubamaja and Viru shopping Centre area – take either **trolley nr 3** or **bus nr 36**. Trolley nr 3 from "Kaubamaja" stop (near the big shopping center called "Viru"/Kaubamaja) or from Freedom Square and get off at "Keemia" stop that is just next to TalTech campus – you can see the TalTech main buildings, library and Academic hostel is ahead. The trip takes about 20-25 min.

Bus nr 36 from "Viru" bus stop or Freedom Square to "Tehnikaülikool" stop that is just in front of TalTech main building. The trip takes about 20-25 min.

Campus location: Ehitajate tee 5, 12616 Tallinn, Estonia

Public transports

Public transports video guide: click [here](#).

One way ticket can be purchased from "R-kiosk" situated in the airport. Purchase a Public Transport Card from R-kiosk for the price of 2 € and load 30 euros on that card by giving money to the sales person and they will upload it on to the card. This first payment will allow you to ride for one month in Tallinn. After that, you would have to recharge it with another payment. The card is valid until the end of your study period.

One ride ticket: A ticket purchased from driver (at the price of 2 €) will grant you the right for one ride. You must only use exact cash to buy a ticket from the driver of the public transport vehicle. You must enter the public transport vehicle, using the front door, to purchase a one way ticket. A passenger will be required to keep the one way ticket until the end of the ride. One way tickets are not marked, punched or validated. Until EU students have received the Estonian ID card and registered your living place in Tallinn, you will have to pay for a full price ticket. Validate your journey with the Public Transport Card immediately after entering the public transport vehicle. Validators are located by every door in all vehicles.

Public transport is free of charge in Tallinn for all EU students. You have to register yourself as Tallinn resident to have free public transportation and apply for Estonian ID-card. Not available for students who are coming to Estonia with visa .

Information about ticket prices [here](#).

Public transport timetables are available [here](#).

Costs of living

Living costs in Estonia are considered to be lower than in most other old EU countries, at the same time the prices are not low as most of people may expect. General feedback from foreigners who have spent some time here, is that living conditions are similar to those in Western or Northern Europe. Estonia uses, the single European currency (EUR, €).

Examples of living costs in Tallinn

Deposit (fr. Caution or Dépôt de garantie): equivalent of one month's rent

Health insurance for non-European students per year: free

Home insurance in a university hall of residence per year: €20-60 (The cost depends on the type of your accommodation)

Mobile phone and Sim Card: approx. €20

Basic items (washing up liquid, cleaning products): €100

Accommodation in a university hall of residence: €230-400

Studio or apartment in town: €300-500

University meals (lunch only): €65 per month (= 20 meals x €3.25)

Food: €100 - 150 per month (without university catering)

Bus subscription: €29.40 / month (+ card Grand R : 5€, to paid once)

Campus life and facilities

Library: The main function of Tallinn University of Technology Library is to serve TalTech, other higher education institutions, research institutions, government agencies and companies.

Library's website:

<https://www.taltech.ee/en/about-library-0>

Meals: The canteen at TalTech provides meals at a good price during lunchtime. There are cafes, shops and restaurants in the neighbourhood of the hostel. A warm lunch (main course + drink) costs about €5 at the canteen. A meal at medium level restaurant ranges between €8 and €15.

Students can also use the public kitchen facilities in the Hostel to prepare their own meals. There is a microwave in the main building of the university.

Student associations: The most important organisations for exchange students are **ESN Tallinn** and **ESN TalTech IC**. You can find them on Facebook.

Sport at TalTech: Students can register to the Basics of Physical Movement and get credits for the sport classes. More information [here](#).

Orientation Days: We highly recommend attending/watching the Orientation Days as it is the best opportunity to ask all the questions that may arise during your first days at the University. During the Orientation Days you will hear about:

- academic issues, TalTech web based study system, Moodle, timetable, course registration, classes and professors
- services provided by the university - library, sport center, student counselors
- possibilities to take part in student activities, student organizations
- settling down in Tallinn and Estonia etc.

More information:

kerti.sonmez@taltech.ee

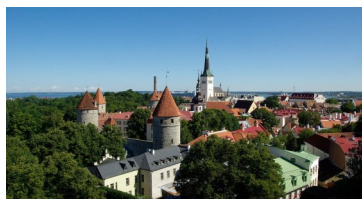
Some ideas of visits and events in Tallinn

Tallinn offers a wide variety of entertainment with something for everybody. Its theatres and cinemas, concerts, festivals, exhibitions, museums and nightclubs are open year round to the visitors. National Opera's season lasts from August to June. During summer, lots of different open-air performances and concerts are held where classics share the stage with pop and rock culture.

More information about different events:

Cultural events: <https://www.visittallinn.ee/eng/visitor/see-do/things-to-do/events>

Concerts: <https://concert.ee/en/>,
<https://www.piletilevi.ee/>



More information about studies at TalTech available here

BeforeMobility:

[Admission](#)
[Accommodation](#)
[Arrival](#)
[Orientation Days](#)
[Internship](#)
[Free-Movers](#)
[Students with Special Needs](#)
[Courses in English](#)

Academic Info for Exchange Students:

[Academic Calendar for Exchange Students](#)
[Grading System](#)
[Academic Policies](#)
[Application Procedure for Visiting Student](#)

[Courses in English](#)
[Changing Learning Agreement](#)
[Registration to Exams](#)

[Citizenship and Residence Issues:](#)

[Visa for Non-EU students](#)
[Applying for D-Visa in Tallinn](#)
[Registration of Residence in Estonia for EU students](#)
[EU students leaving from Tallinn](#)

[Practical Information](#)

[Cost of Living](#)
[Estonia](#)
[Health Insurance](#)
[Emergency and Doctors](#)
[Covid-19](#)
[Opening a Bank Account](#)
[112](#)
[First Days at TalTech](#)
[Your Doctor in Tallinn](#)
[Self-isolation](#)
[Exchange Students' Timeline at TalTech](#)
[Doctors in Tallinn](#)
[End of the Semester](#)
[Ambulance](#)
[Dentist](#)

[Short introduction of Tallinn](#)
[Short Introduction of TalTech](#)
[Course Description](#)
[Cultural Activities](#)

[Arrival, Accommodation, Meals:](#)

[Arrival by Plane](#)
[Arrival by Sea](#)
[Arrival by Bus](#)
[Reception of Students](#)
[Accommodation](#)
[Meals](#)

[FAQ:](#)

[Application](#)
[Choosing the courses](#)
[Arriving to Tallinn](#)
[Accommodation](#)
[Right of Residence](#)
[First Days FAQ](#)

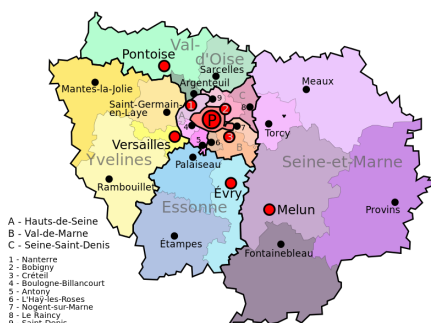
Check the TalTech's [Student ABC guidebook 2020/2021](#) as a PDF file or download the TalTech Student ABC app for Android at [Google Play](#) or for iOS in [App Store](#).

Second and Third Semesters at AgroParisTech (France)

Important: This section includes information about Semester 2 and Semester 3 at AgroParisTech (administrative procedures, public transports, student life etc...). Differences between the 2 Semesters are detailed in this section (for instance concerning accommodation or campuses).

Presentation of the city and the region

The Paris region called Île-de-France is considered as the administrative and economic heart of France. Representing 19% of the French population, the Paris region is the largest region in the country and is divided into 8 counties.



Campus Semester 2

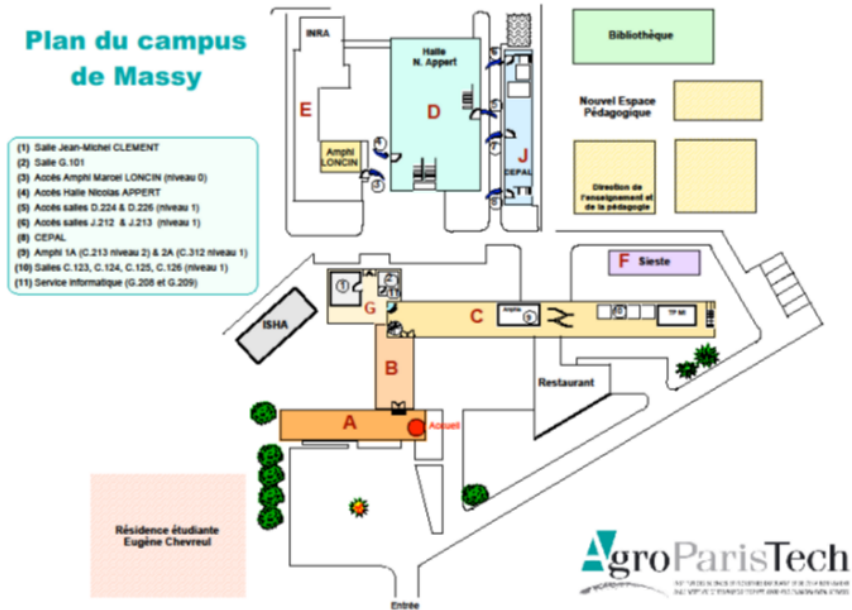
The Massy Campus where you will study during Semester 2 is located in the county Essonne in the south of Paris (next to Palaiseau in the map). The Campus is open between 7.30 am and 6.30 pm, you can reach it by taking the RER B train (stop at the station « Les Bacconnets »).



Address: 1 Rue des Olympiades, 91300 Massy

Campus Semester 3

AgroParisTech will normally move to its new campus in Palaiseau in Spring / Summer 2022. It is expected that Semester 3 classes will take place in the new exiting environment of Paris-Saclay, gathering campuses from several Higher education institutions, research labs and companies. The **AgroParisTech – Paris Saclay campus** will gather around 3500 students, teachers and researchers from AgroParisTech and INRAE (National Research Institute for Agriculture, Food and the Environment).



Depending on the date when the new Saclay campus will be ready to welcome students, you may have some courses in the following locations:

- Paris Claude-Bernard campus

The Paris Claude-Bernard campus is located at the heart of Paris in the famous “quartier latin”, 10 min walk from the French Sénat and the Jardin du Luxembourg.

Find the Campus Map [here](#).

Address: AgroParisTech, 16 rue Claude Bernard, F-75231, Paris Cedex 05

The future AgroParisTech Paris Saclay Campus:



- Institut Jean-Pierre Bourgin (IJPB)
Inrae, Versailles

IJPB is part of INRAE (National Research Institute for Agriculture, Food and the Environment), one of the Bioceb associated partners, AgroParisTech and UP Saclay. It gathers unique resources and competences in biology, chemistry and mathematics dedicated to research on plants. It covers a large field of activities, from fundamental work on the development and physiology of plants to finalized research for the alimentary use and non-alimentary use of plant products in the framework of a sustainable agriculture. IJPB is located in Versailles, in the south of Paris.

Address : Institut Jean-Pierre Bourgin -
INRA Centre de Versailles-Grignon -
Route de Saint-Cyr - 78026 Versailles
Cedex - France

Visas and resident permit (S2 and S3)

Before arriving in France, you must apply for a visa for France. Upon arrival in Reims, you then have to validate your visa in order to receive a Residence permit (see below Semester 1 in Reims). You will have no specific procedure to do when travelling to Paris as you will stay in France.

For the students coming from Tallinn, you don't have to apply for a visa or a resident permit if you obtained a 2 years resident permit in France as students in a European programme of mobility.

Enrolment and administrative procedures (S2 and S3)

As you already sent documents (visa, identity document...) and specific data to us when you applied to Bioceb, you will normally not have to provide specific documents to AgroParisTech. We will take charge of your enrolment at AgroParisTech. If a document or an information is missing, we will contact you. Some information will be transferred from URCA to AgroParisTech such as your student number (INE: numéro d'Identification National Etudiant) and your CVEC number.

You will then receive an email of confirmation informing that you are formally enrolled at AgroParisTech / UP Saclay. Your enrolment at AgroParisTech will allow you to have a specific email address as well as a student card. You will also need to activate your e-Campus account with your AgroParisTech account.

ecampus: ecampus is the online pedagogical tool of Université Paris-Saclay. You will find a section dedicated to all the courses you are registered to. Ecampus is a useful tool for the professors to share files and pedagogical resources with you as well as creating online courses if necessary.

How to create your ecampus account: click [here](#).

Accommodation

Semester 2: Residence Chevreul in Massy

You will be proposed a studio-apartment at the Residence Chevreul just in front of the AgroParisTech Massy Campus. The residence proposes individual studios of 18 m² with kitchenette, bathroom, desk, bed, table, stools, various storage, etc... The rent is approwimatively 510 euros per month.

Find more information about the Chevreul residence [here](#).



Private sector

Living in the Chevreul Residence is not mandatory: you can also rent a room in the private sector. But looking for a flat in Paris is time-consuming and difficult. Students are required to have a guarantor who resides in France and you are generally asked to make a deposit (never send money by wireless transfer!). It is very important to make visit properties: a lot of the ads for student housing in Paris do not reflect the quality of the flat, which may be in very poor condition. It means you will need to travel from Reims to Paris in order to make the visits. In Paris, monthly rents are at least €30 per m².

You may rent space directly from a property owner or through a rental agency. If you rent through an agency, you will have to pay fees equal to

about a month's rent. If you want to avoid paying these fees you can try to find accommodation here:

- **CROUS ads:** These offers are reserved for students.
- **Ads for foreigners:** the American church, the Swedish church and FUSAC magazine allow you to consult job and housing ads, in French or in English, free of charge.
- "**De Particulier à Particulier**" magazine and website (www.pap.fr).

You can also choose the option of shared apartments. Here are some useful sites for shared apartments:

www.appartager.com
ww.koloc.org
www.recherche-colocation.com
www.portail-colocation.com
www.colocation.fr
www.appartement.org

Semester 3

The reservation of accommodation in the Paris student residences generally open in April. It means that AgroParis-Tech will enter in contact with the residences in April in order to secure accommodation for the students. Thus, the name of the student Residence where you will live cannot be communicated before April / May. AgroParisTech will look to secure

accommodation in one of the two following residences:

The MIAA (House of Agriculture and Food Industry) as part of the Cité internationale universitaire de Paris (CIUP): www.ciup.fr/en/les_maisons_industries_agricoles. It is located in Paris (with direct transportation to the Massy centre where you will be studying). The CIUP is specifically designed for international students (most of the required administrative formalities for foreign students can be done directly there, such as applying for a residence permit or for housing assistance). It provides accommodation complete with



a wide range of services (featuring a theatre, library, restaurant, sports facilities, support services and more). Internet is included in the rent. Please note that the MIAA director requires students to be quiet after 10 pm. You can find more information on the CIUP website (in French and English). You can also find more information there on other

Houses, if you wish to apply to another one. The decision is yours; but in this case we can't make sure that a room is available for you.

The MINA (Maison Internationale AgroParisTech): The MINA is also part of the CIUP in Paris. This residency primarily welcomes students enrolled at AgroParisTech or doing internships in its laboratories, INRA or research organizations partners of AgroParisTech. The places are more limited than in the MIAA.



More information about the MINA [here](#).

Housing Assistance

You can apply for a housing subsidy at the Caisse d'Allocations Familiales (CAF). The CIUP has a CAF office where you will be able to apply for this. You can also apply on the CAF website. Assistance amounts are based on the rent and the student's resources. Married couples submit just one application. If you share an apartment, each roommate makes an

application. Applications must be completed within 3 months. If your request is granted by the CAF, you will receive the housing allowance on the 5th of each month. Please note that you will not receive any allowance for the first month. You can receive the CAF only if you get a one-year visa.

Travelling to the University

Massy Campus (S2)

If you are travelling from Reims, the best is to take the train, which is direct to Paris Gare de l'Est. After this you have to take the Metro 4 to Gare du Nord (one station) and the RER B from Gare du Nord to Les Baconnets (terminal Saint-Rémy-les-Cheuvreuses or Massy-Palaiseau). From Les Baconnets you can either walk 15 minutes to AgroParisTech, (1 Rue des Olympiades, 91300 Massy) or take the bus 119 until "Bourgogne".

You can also choose to take the bus (flixbus, ouibus) or the rent a car.

From outside France : If you arrive from Charles-de-Gaulle airport or Orly airport, you have to take the RER B to Les Baconnets.

Travelling to Paris Cité Universitaire (S3)

If you are travelling from Tallinn or another country, you will arrive either at Airport Roissy Charles de Gaulle or Orly Airport. You will have to take the RER B until Cité Universitaire (You will have first to take a shuttle to Antony RER if you arrive from Orly Airport).

Public transports (S2 and S3)

Paris public transportation is run by the RATP. They sell one-way tickets, weekly/monthly passes, and student passes. Paris “intra muros” (“within the walls”, Paris city itself) and its suburbs are covered by the RATP (same passes, same tickets, same fares). But it is divided into areas: Paris is area 1, and then there are areas 2 to 5, 2 being the closest and 5 being the furthest away from Paris. A one-way ticket can be used only within one area; there are specific fares for travel between areas. The passes can cover transportation between areas. Travel to and from airports has special fares. Paris has several transportation networks: metro, RER (light-rail network up to a distance of 30 km from the city), tramways, and buses. The tickets and passes can be used on any of them. The AgroParisTech centre where you will be studying (Massy) is in area 4.

However from September 2015, there are no more distinction between the different areas if you have a monthly pass (Navigo or Imagine R). You can choose between buying tickets everyday (which will be expensive in the long run) and having a pass. There are two types of pass:

- **Monthly Navigo pass**: It can be used from the first to the last day of each month (and not a “custom” month for instance from the 15th of August to the 15th of September), for unlimited travel in the chosen area. You can buy the pass when you arrive and have it renewed every month., in every metro or RER station. - Prices: 75,20€/month

- **Imagine R student pass** : The Imagine R Pass is for students (under 26 years). It lasts one year. But it can be cancelled in case you are leaving France because of your studies (make sure you do this early enough before leaving France). You can use it for unlimited travel in all areas. For you, the best option for the starting date of the pass is 1st of February, but be careful because the RATP needs 21 days (from the reception of your form and documents) to make the pass. You can choose to pay the full amount of the pass in one time or have it divided into 9 monthly payments (same total price). - Prices: 38€/month.

More information about the Imagine R student pass [here](#).

Check the [Journey Planner](#) (you can also upload the app “RATP itinéraires” on your

Costs of living in the Paris region

Taking into account student discounts, the average monthly student budget is around 800-900€ in the Paris region, including rent (around 500€ in the Chevreul Residence, more

on the private market), phone, internet, food, transport pass, leisure activities... The cost of daily living in Paris may be twice as high as in other parts of France. Here are some example of usual costs:

Examples of living costs in the Paris region

Annual transit subscription in Paris at the student rate: 342 Euros

1 cinema ticket at the under 26 price: between 5 and 7.50 Euros

Check up with a doctor: 25 Euros

1 kg of pasta: 1.50 Euros

1 litre of milk: 1.20 Euros

A meal in a restaurant: 10 to 20 Euros

A meal at the CROUS: 3-4 Euros

A room in a Student residence: between 300 and 550 Euros

SIM card for mobile phone: 10-15 euros

Student life and Campus life

Student associations

Students associations are a good way to meet people and enjoy the student life in AgroParisTech. The « bureau des élèves » (BDE) is the main one. The student associations in AgroParisTech also have a joint structure, the federation of students associations (FAE).

You can also be part of the association **Agrobienvenue**. The association welcomes international students, helping them with administrative procedures, puts you in contact with a buddy but also organises parties or various activities during the year. You can contact the BDE if you are interested.

AgroParisTech welcomes students from two other Erasmus Mundus master degrees (**FIPDes** and **EMABG**). We will put you in contact with the Erasmus Mundus students of these two master degrees so that you can share

your experience of international students with them!

Contact the BDE:

bde.association@agroparistech.fr

Website: <http://bde-agroparistech.fr>

Sport and art

Sport and art at UP Saclay : <https://www.universite-paris-saclay.fr/en/campus-life/arts-and-sport>

Sport at Massy : A sport association offers several activities on the Massy campus. For more information, you can contact the person in charge of sports on the Massy center, Jean Pichard: jean.pichard@agroparistech.fr.

Libraries

Each AgroParisTech center has a library:

- In the Massy Center, the person in charge is [Agnès Grimal](#).
- Contact and address of the library at Claude Bernard Campus are available [here](#).
- Find information about libraries of the Paris Saclay network [here](#).

Note: While being an autonomous higher education institution, AgroParisTech joined Université Paris-Saclay (UPSaclay) in 2015 as founding member and became a component institution. In addition to AgroParisTech, Université Paris-Saclay benefits from the association of 5 other higher education institutions and 7 research organisations, overall gathering 13% of French research potential. It will be a stimulating excellent and interdisciplinary framework for your study experience. This organisation means that AgroParisTech fully operates its Master programmes included in UPSaclay framework (registering, hosting, welcoming international students, hiring professors, delivering courses, organising exams, evaluating students, managing EU funds including payment of scholarships, etc.) while UPSaclay delivers the degrees

Important academic dates

- **Beginning of S2:** Beginning of February
- **End of S2:** mid-June
- **Beginning of S3:** Beginning of September
- **End of S3:** Beginning of February

French lessons: As Bioceb students, you will benefit from two French languages courses depending on your level (beginner or intermediate) : one course is dedicated for beginners and the other for intermediate and advanced students.

Visit the Paris region

Paris is known worldwide for its monuments, museums and its way of life (concerts, terrasses, food etc...). The Paris region also offers nice ideas of visits if you want to discover the region outside Paris.

Here are useful websites which will give you some ideas of visits :

<https://en.parisinfo.com/>

<https://www.visitparisregion.com/en>

<https://www.france-voyage.com/tourism/>

Nôtre-Dame Cathedral



Parc de Sceaux next to Massy



Versailles Castle





European Master in Biological
and Chemical Engineering for
a Sustainable Bioeconomy



See you soon !

Bioceb email:
bioceb@agroparistech.fr